



1238 Daylily St \$329,900

3 Bed, 2.5 Bath, 1574 sf, 3-car garage, Loft

This sleek, modern home has a great 2-story floor plan with open living spaces on the main, bedrooms all upstairs. Quartz kitchen counters with full back splashes and island. Covered entry and roomy back patio. Smart flooring selections in easy care hardwood plank, Green Label® certified carpet and designer vinyls. Stainless finish appliances, tile-faced gas fire place with white millwork mantle. Landscaped front yard, fenced + gated back. [Energy Star®](#) certified.

Features include: EPS energy efficiency scoring, Epoxy-coated garage floor, Glass shower enclosure in master, Gas fire place, 96% High-efficiency furnace, EPA Air-Plus® certified, Front yard irrigation system with timer, Solar-ready panel.

3 Bed 2.5 Bath, 1574 sf, 3-car Gar. Lot 101 / Prop Type: Detached / ML# 19337634 / Heritage Elem / Valor Mid / Woodburn HS / BI-MICO / DW / DISP / GAS-RNG / SSAPPL / 95+ GAS-FOR-AIR / GAS-FPLC / LAM-FL / VINYL-FL / WW-CARP / COV-ENTRY
1238 Daylily St. Woodburn, OR 97071



Sample photo from one of our completed homes. Actual finish will vary, shown for reference only



For project updates, photos & more:

Scan this code

Visit [NewHomeRealty.com](https://www.newhomerealty.com) for a selection of new home listings

Call 503.793.4336

Airika @ [NewHomeRealty.com](https://www.newhomerealty.com)



Exclusively marketed by New Home Realty
Airika Waible, Principal Broker
Licensed in Oregon

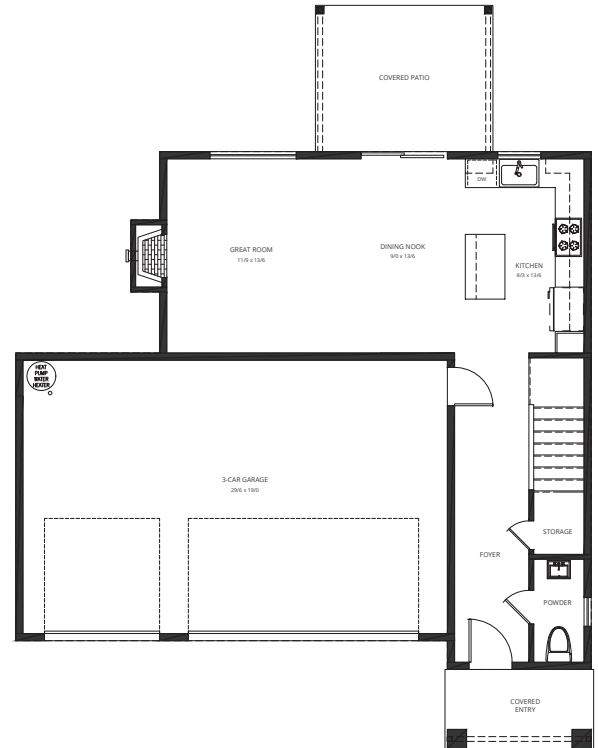
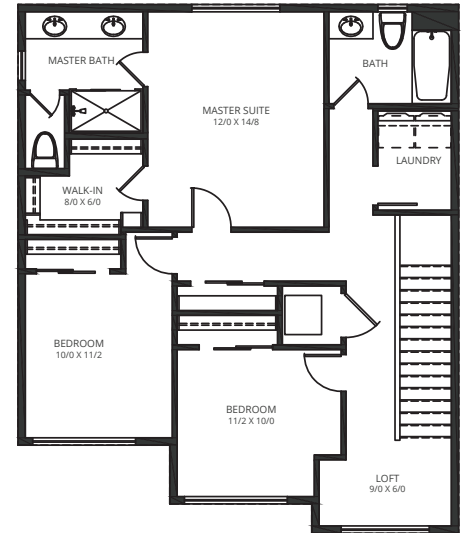
www.newhomerealty.com



Boones Crossing

Boones Crossing | Lot 101 Floor plan
3 Bed, 2.5 Bath, 1574 sf, 3-car garage, Bonus room

Lot 101 - elevation / floor plan drawings



EPS™ IS AN ENERGY PERFORMANCE SCORE THIS HOME:

Estimated average energy cost per month: Electric \$XX, Natural Gas \$XX
(Estimated Energy Cost calculated using \$0.11 per kWh and \$0.91 per therm)

ENERGY-EFFICIENT FEATURES that contribute to this home's score:

- Insulated Ceiling: R-60 Efficient Windows: U-0.3 Space Heating: 96.0 % AFUE Furnace
- Insulated Walls: R-23 Efficient Lighting: Envelope Tightness: 3.0 ACH @ 50Pa
- Insulated Floors: R-30 Water Heater: Heat Pump 3.2EF:



Stafford Homes and Land | Crafting Elegantly Efficient Homes



staffordhomesandland.com

Specifications, pricing, finish and designs subject to change without notice. Features, trim, details and elevations will vary from artist rendering and marketing plan. Materials subject to market fluctuations, supplier availability and product cycles; which may require substitution of equal to or better than items solely at the discretion of the builder. REV. 08/19/2019